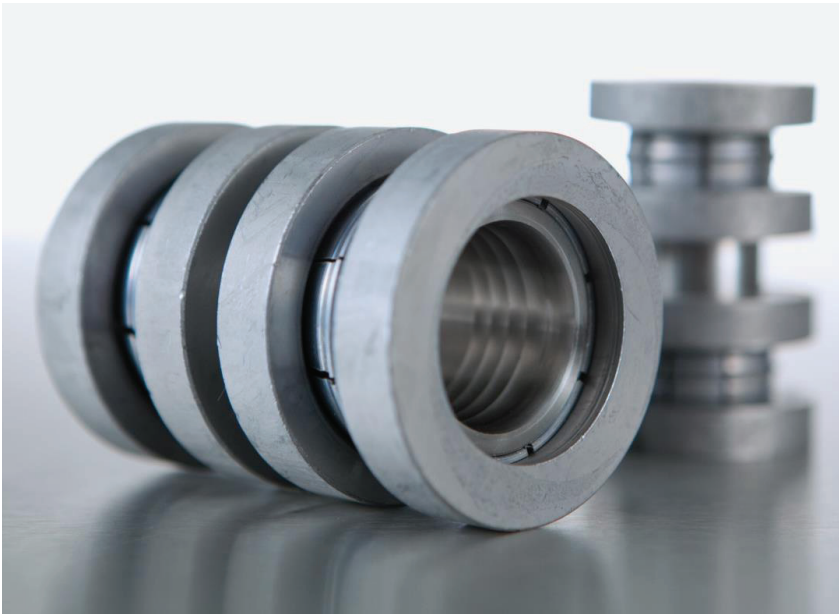


PreFiS™ Connectors

by BENTELER



Installing new or modifying existing piping systems for process fluids such as paint or high viscosity sealer header systems has never been faster or easier than with the Hosco PreFiS connector family of products.

Available in 316 SST wetted parts for paint or process fluids and carbon steel for high pressure systems, the PreFiS system of connectors is a full line of couplings, reducing couplings, tees, reducing tees, lateral wyes, and others to provide smooth-bore, cavity and silicone-free, and low shear operation—the attributes which serve as Hosco's cornerstone of design.

See reverse side for configurations and tooling.

Advantages

- Reduced Installation time:
Complete a 2" carbon steel fitting in 40 seconds per side; 3" in 90 seconds per side
- Less effort: No PST sealant, gaskets, o-rings or welding required
- Resistance to high pressures, temperatures and chemicals
- Available in various configurations and dimensions

Pipe/Tube Diameter

Carbon steel

3/8" – 3.5" (10.0 – 88.9 mm)

Stainless steel

3/8" – 3.0" (10.0 – 76.1 mm)

Temperature Range

-67°F – 572°F (-55°C – 400°C)

Pressures

Carbon steel

up to 9137 psi (630 bar)
operating pressure

Stainless steel

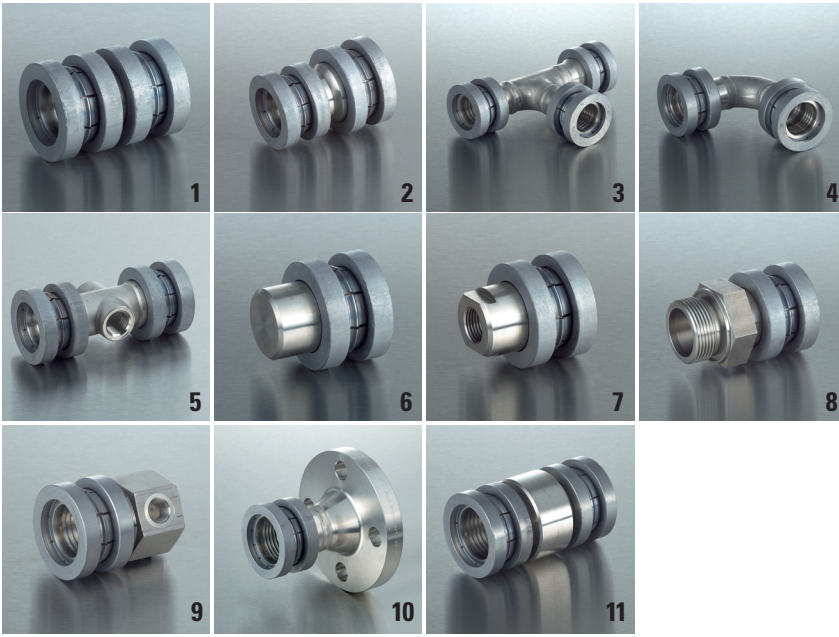
up to 3770 psi (260 bar)
operating pressure

Approvals



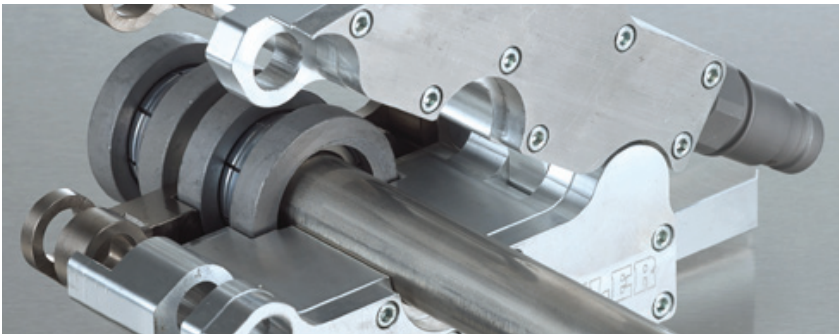
28026 Oakland Oaks Court, Wixom, MI 48393 • www.hosco.net • (248) 912-1750 • 855-GO-HOSCO

Multiple PreFiS Configurations



- 1 Straight coupling
- 2 Reducing coupling
- 3 Equal tee and reducing tee
- 4 Bend/Sweep elbow
- 5 Distribution block
- 6 End plug
- 7 Parallel female BSP stud coupling
- 8 Male BSP stud coupling
- 9 Distribution block with blind end
- 10 Flange adapter
- 11 Weldable bulkhead coupling

Tooling



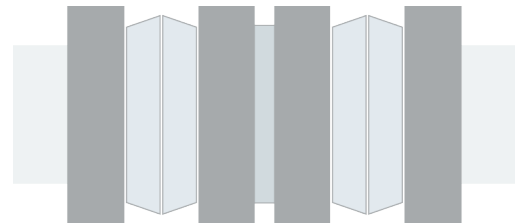
The installation of the press fitting is done with the help of a press tool and a high pressure pump. Our press tools come in an open or closed configuration, are easy to handle, and can be used in narrow spaces satisfying the tight center-to-center requirements.

Components

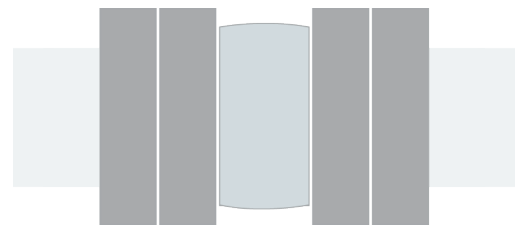
PreFiS products consist of a cylindrical body with a cogged inner surface and two press ring sets. It only takes a few seconds to crimp the fitting onto the pipe.

No PST sealant, gaskets, o-rings, or welding required for a clean and secure installation of the PreFiS connectors.

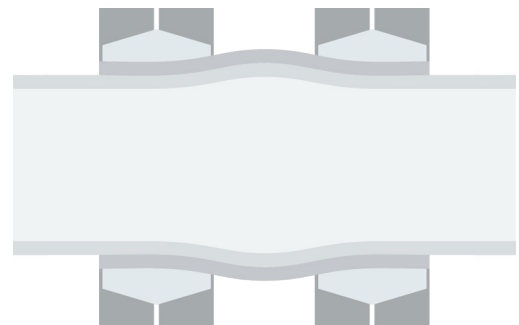
- Press rings
- Coupling Sleeve
- Slide Rings
- Pipe



Unpressed condition



Pressed condition



Pressed condition (cross section)

